

# simplex

## SIMCRYL PM.2119.XU i PM.2129.XU

### Acrylic topcoat in full gloss



**Agricultural,  
Construction  
& Earthmoving  
(ACE)**



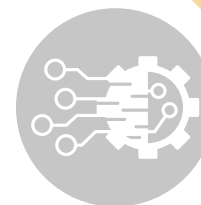
**Buses  
& Truck  
Cabins**



**Commercial  
Vehicles  
& Cranes**



**Fork-lift  
& Handling  
Equipment**



**Machinery  
& Technical  
Equipment**

### PRODUCT DESCRIPTION

Acrylic topcoat with fast drying time and durable color. It is characterized by its excellent covering power and ease of application. In combination with simplex acrylic pigments, it has high UV resistance. The product's excellent flow and scratch resistance allows it to be used in many markets, but especially where excellent quality and efficiency are required. It can be applied over a variety of epoxy, acrylic or polyurethane primers.

In combination with PM.1422.RE epoxy primer, it has a corrosion protection of C4-M (C3-H) level already at 120 µm of system thickness (DFT).

Ideal for the coating of commercial vehicles, buses or tractor units due to its high gloss, fast drying and excellent coverage. Its semi-matt equivalent is **SIMCRYL PM.2112.XU**. By mixing these two products, different (intermediate) gloss levels can be obtained (depending on the ratio in which they are mixed).

### TECHNICAL DATA

Density at 20°C	1,003 ± 0,01	
Delivery viscosity	85" ± 2 DIN4	
Solids content of A component	48,8-69,4	by weight
	48,7-69,2	by volume
Solids content of A+B mixture	50,7-67,2	by weight
	49,4-65,4	by volume
Solids content in RFU (A+B+C)	46-60,9	by weight
	44,7-59,3	by volume
V.O.C of the product	609 g/l	
V.O.C in the mixture (A+B)	165-380 g/l	
Available colours	RAL, NCS, PANTONE and all solid colors used in the automotive industry	
Available hardeners	Polyurethane and acrylic hardener <b>PM.6230</b> standard	
Available thinners	<b>CP 070</b> (slow), <b>CP 075</b> (very slow), <b>CP 040</b> (standard)	
Gloss 60°	~ 95%	
Theoretical yield	7-8 m <sup>2</sup> (50 µm)	

Recipe of the product in accordance with VOC guidelines (Regulation of the Minister of Economy and Labor of January 16, 2007 on the reduction of VOCs, Regulation of the Minister of Environment of December 20, 2005 on emission standards from installations). The products supplied by our company undergo many factory tests, thanks to which they can meet the highest requirements. However, you should remember about the individual conditions of storage, preparation and application, which may affect the effect of the coating. The guarantee of maintaining the highest quality of the coating is the use of the product only with products from the Producer and in accordance with the Manufacturer's recommendations. The Producer does not guarantee the preservation of the parameters and compatibility of the Products with products not from the Producer. The condition for recognizing the warranty and any claims is the correct application of the technology and technique of using the Products - in accordance with the technical sheet and performing a test spraying before the target painting.

Multichem Sp. z o.o. | 62-030 Luboń, ul. Przemysłowa 2 | tel. +48 61 893 37 31, fax +48 61 893 37 32 | e-mail: info@multichem.pl www.multichem.pl



## THE TYPE OF SUBSTRATE TO WHICH THE PRODUCT CAN BE APPLIED

Steel, aluminum and GRP parts protected by old coatings with stable characteristics or in **SIMPLEX/ PROFIX** primers



## SURFACE PREPARATION BEFORE PAINTING

Apply to clean, sanded, degreased surfaces (e.g. with **CP 015** quick remover or **CP 016** slow remover), or in the wet-on-wet method.



## PRODUCT PREPARATION

Mixing ratio with hardeners and thinners

<b>CONVENTIONAL SPRAYING</b>			
<b>traditional spraying gun / airspray / diaphragm pump</b>			
<b>BY WEIGHT</b>	<b>A</b>	<b>B</b>	<b>C</b>
4:1	100 g	24 g	13 g
<b>BY VOLUME</b>	<b>A</b>	<b>B</b>	<b>C</b>
4:1	100 parts	25 parts	5-10 %
<b>AIRMIX</b>			
<b>BY WEIGHT</b>	<b>A</b>	<b>B</b>	<b>C</b>
4:1	100 g	24 g	13 g
<b>BY VOLUME</b>	<b>A</b>	<b>B</b>	<b>C</b>
4:1	100 parts	25 parts	5-10 %



## APPLICATION



CONVENTIONAL SPRAYING traditional spraying gun / airspray / diaphragm pump		
<b>nozzle</b>	<b>air pressure</b>	<b>air assisted pressure</b>
1,3-1,6 mm	2-2,5 BAR	nie dotyczy
AIRMIX		
<b>nozzle</b>	<b>air pressure</b>	<b>air assisted pressure</b>
4-09, 4-11, 6-09, 6-11	2,5-4 BAR	2-3 BAR



### Pot life

2,5 h



### Application

1,5-2 layers of  
50-100 µm each



### FLASH OFF

10-15 min  
depending on  
the layers (WFT)



### ROLLER APPLICATION

0-5%  
thinner  
CP 075



## DRYING TIME

<b>Dust dry</b>	30-45 min at 20°C
<b>Ready to handle</b>	1,5-2,5 h at 20°C
<b>Tape free</b>	10 h at 20°C
<b>Touch dry</b>	1,5-2,5 h at 20°C
<b>Through dry</b>	7 days at 20°C
<b>Drying / heating</b>	30 min at 60°C

The products should be stored in tightly closed packaging in a ventilated and cool room. Recommended storage temperature: 5-30°C. Protect from sunlight. Shelf life: 24 months from date of production.